

A background image showing children playing in a park. In the foreground, two boys are digging in the dirt with yellow buckets. One boy is wearing a red and grey shirt, and the other is wearing a blue plaid shirt. In the background, another child is playing with a blue hula hoop, and a boy in a blue shirt is playing with a white ball. The scene is outdoors with green foliage and a building in the distance.

**UNDERSTANDING THE NEW
ENHANCED CARE MANAGEMENT
(ECM) BENEFIT for CHILDREN and
YOUTH**

June 14, 2023



Objectives

1. **Provide a forum** for providers to understand the Enhanced Care Management (ECM) benefit, ECM implementation and connections to related systems of care for **Children and Youth.**
2. **Provide an opportunity** to hear your feedback and questions related to the ECM roll-out for **Children and Youth to inform their planning.**
3. **Document** questions and issues related to system coordination, eligibility, and network development and how Health Net can support you becoming an ECM provider for **Children and Youth.**

Getting to Know Provider Attendees

Zoom Polls



CALIFORNIA ADVANCING
AND INNOVATING MEDI-
CAL (CaAIM)

CaAIM



Led by Department of Healthcare Services, CaAIM is: California Advancing and Innovating Medi-Cal



A 5-year plan to transform and integrate Medi-Cal's programs more seamlessly with other social services



Overarching goal is to improve medical & social outcomes for Medi-Cal recipients, especially those with the most complex needs



Other goals are service standardization, consistent & equitable care across the state, emphasizing outreach & a “no wrong door” approach

Key Elements of CalAIM:
Relevant to Children and Youth

**Population Health Management
(PHM)**

```
graph TD; PHM[Population Health Management (PHM)] --> ECM[Enhanced Care Management (ECM)]; ECM --> CS[Community Supports (CS)];
```

The diagram consists of three white rounded rectangular boxes with black outlines, arranged vertically and slightly offset to the left. The top box contains the text 'Population Health Management (PHM)'. A white arrow with a black outline points from the bottom right corner of this box to the top right corner of the middle box. The middle box contains the text 'Enhanced Care Management (ECM)'. Another white arrow with a black outline points from the bottom right corner of the middle box to the top right corner of the bottom box. The bottom box contains the text 'Community Supports (CS)'.

Enhanced Care Management (ECM)

Community Supports (CS)



Enhanced Care Management

ECM's 7 Core Services: A Whole-Person approach with a focus on In-Person Services

1

Outreach and Engagement



4

Comprehensive Transitional Care



2

Comprehensive Assessment and Care



5

Enhanced Care Coordination



3

Health Promotion



6

Individual and Family Social Supports



7

Coordination of & Referral to Community & Social Support Services



DCHS Definitions: Adults, Children & Youth

In the populations of focus definitions:

- “adult” is defined as an individual who is 21 years of age or older
- a “child or youth” is defined as an individual up to age 21, which means that Children and Youth definitions for ECM apply up to age 21, with limited exceptions as called out in following slides.

When a Member under 21 is served in ECM and does meet adult ECM criteria upon turning 21, the Member should not be disenrolled from ECM; rather, the ECM Provider and MCP should apply usual “graduation” criteria to determine when the Member is ready to disenroll.



Children eligible July 1, 2023

ECM Populations of Focus (POFs)	Adults	Children
Individuals Experiencing Homelessness	●	●
Individuals At Risk for Avoidable Hospitalization or ED Utilization (<i>formerly called "high utilizers"</i>)	●	●
Individuals with Serious Mental Health and/or SUD Needs	●	●
Individuals Transitioning from Incarceration	●	●
Adults Living in the Community and At Risk for LTC Institutionalization	●	
Adult Nursing Facility Residents Transitioning to the Community	●	
Children and Youth Enrolled in California Children's Services (CCS) or CCS Whole Child Model (WCM) with Additional Needs Beyond the CCS Condition		●
Children and Youth Involved in Child Welfare		●
Individuals with Intellectual or Developmental Disabilities (I/DD)	●	●
Pregnant and Postpartum Individuals At Risk for Adverse Perinatal Outcomes (effective January 2024)	●	●

Unique Expectations for Children and Youth Population Of Focus: Systems Integration

DHCS Expectation for Family-Centered Approach*:

*Launch Enhanced Care Management (ECM) in a manner that recognizes the unique needs of children and builds on Early and Periodic Screening, Diagnostic and Treatment (EPSDT) requirements**

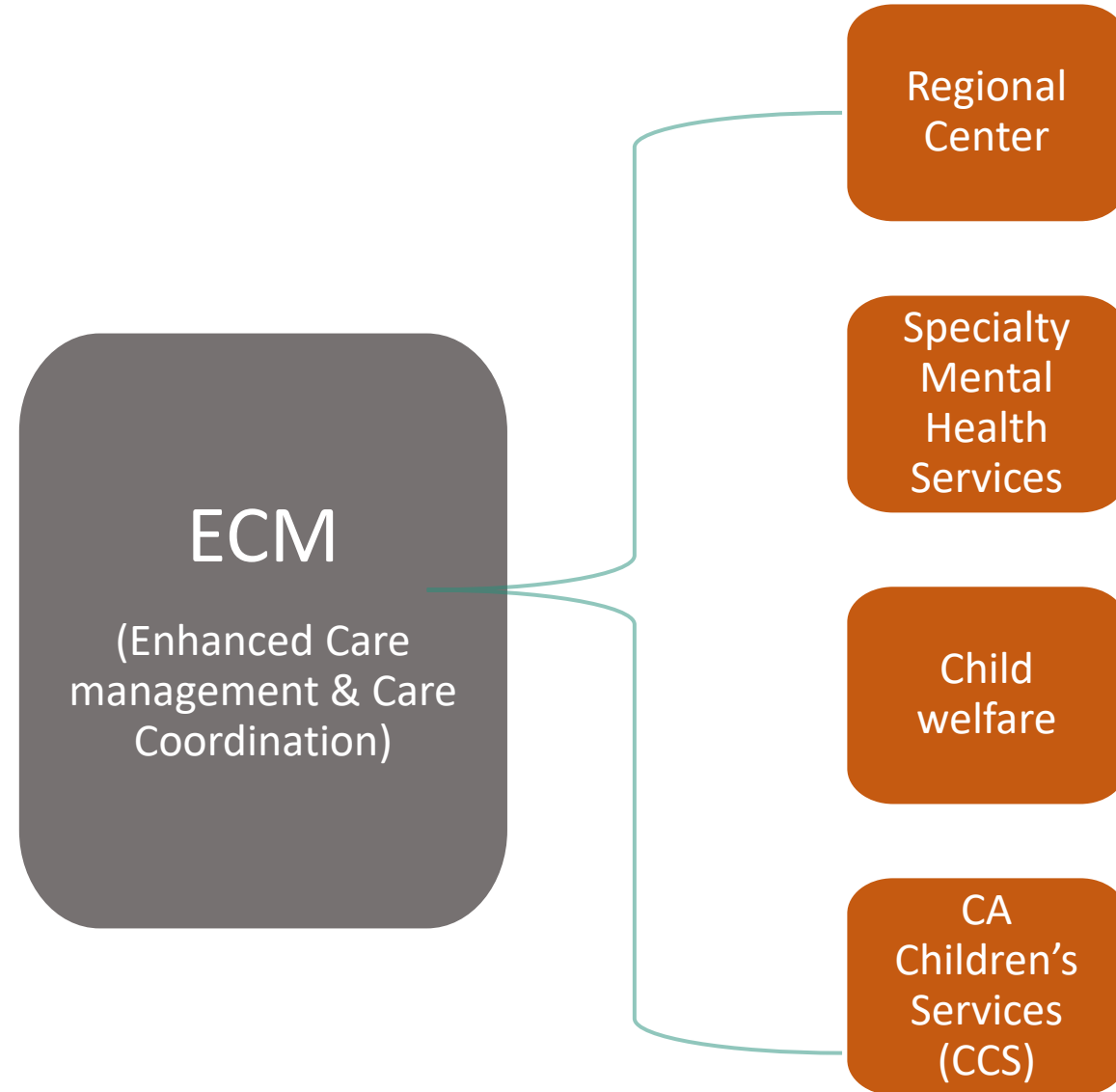
- Provide whole care management **above and beyond** what is provided by the pre-existing programs
- Provide **single point of accountability** to ensure care management across multiple systems/programs — the “air traffic control” role
- Provide **additional** reimbursement for ECM from MCPs to providers to complement these programs

Medi-Cal – One System Among Many Serving Children at Highest Risk for Poor Outcomes

Highest Risk children are often served by multiple systems.

ECM can support the required care management and care coordination

Source: CHCF <https://www.chcf.org/publication/2019-medi-cal-facts-figures-crucial-coverage/#related-links-and-downloads>



**Medi-Cal Children's Health Advisory Panel (MCHAP) Meeting, March 17, 2022

ECM & Other Child-Serving Programs

1) 1915(c) Waivers	2) Services Carved Out of Managed Care	3) Services Carved into Managed Care	4) Dual-Eligible Members	5) Other Programs	6) Programs Serving Pregnant & Postpartum Individuals
Multipurpose Senior Services Program (MSSP)	California Children's Services (CCS)	CCS Whole Child Model (WCM)	Dual Eligible Special Needs Plans (D-SNPs)	California Community Transitions (CCT) Money Follows the Person (MFTP)	Comprehensive Perinatal Services Program (CPSP)
Assisted Living Waiver (ALW)	County-Based Targeted Case Management (TCM)	Complex Care Management (CCM)	D-SNP Look-Alike Plans	Family Mosaic Project	Black Infant Health (BIH) Program
Home and Community-Based Alternatives (HCBA) Waiver	Specialty Mental Health Services (SMHS) TCM	Community-Based Adult Services (CBAS)	Other Medicare Advantage Plans	Hospice	California Perinatal Equity Initiative (PEI)
HIV/AIDS Waiver	SMHS Intensive Care Coordination for Children (ICC)		Medicare Fee For Service (FFS)	California Wraparound	American Indian Maternal Support Services (AIMSS)
HCBS Waiver for Individuals with Developmental Disabilities (I/DD)	Drug Medi-Cal Organized Delivery System (DMC-ODS) & Drug Medi-Cal (DMC) Program Care Coordination & Management Programs		Cal MediConnect		CDPH California Home Visiting Program (CHVP)
Self-Determination Program for Individuals with I/DD	Full Service Partnership (FSP)		Fully Integrated Dual Eligible Special Needs Plans (FIDE-SNPs)		CDSS CalWORKs Home Visiting Program (HVP)
	Health Care Program for Children in Foster Care (HCPCEC)		Program for All-Inclusive Care for the Elderly (PACE)		
	In Home Supportive Services (IHSS)				
	Genetically Handicapped Person's Program (GHPP)				

- ECM is only a benefit for children enrolled in managed care (not FFS)
- Members can be enrolled in both ECM and the highlighted programs
- Managed care plan must ensure non-duplication of services between ECM and case management services that may be provided under highlighted programs*

1. ECM and the other program

MCP Members can be enrolled in both ECM and the other program. ECM enhances and/or coordinates across the case/care management available in the other program. MCP must ensure non-duplication of services between ECM and the other program.

2. Either ECM or the other program

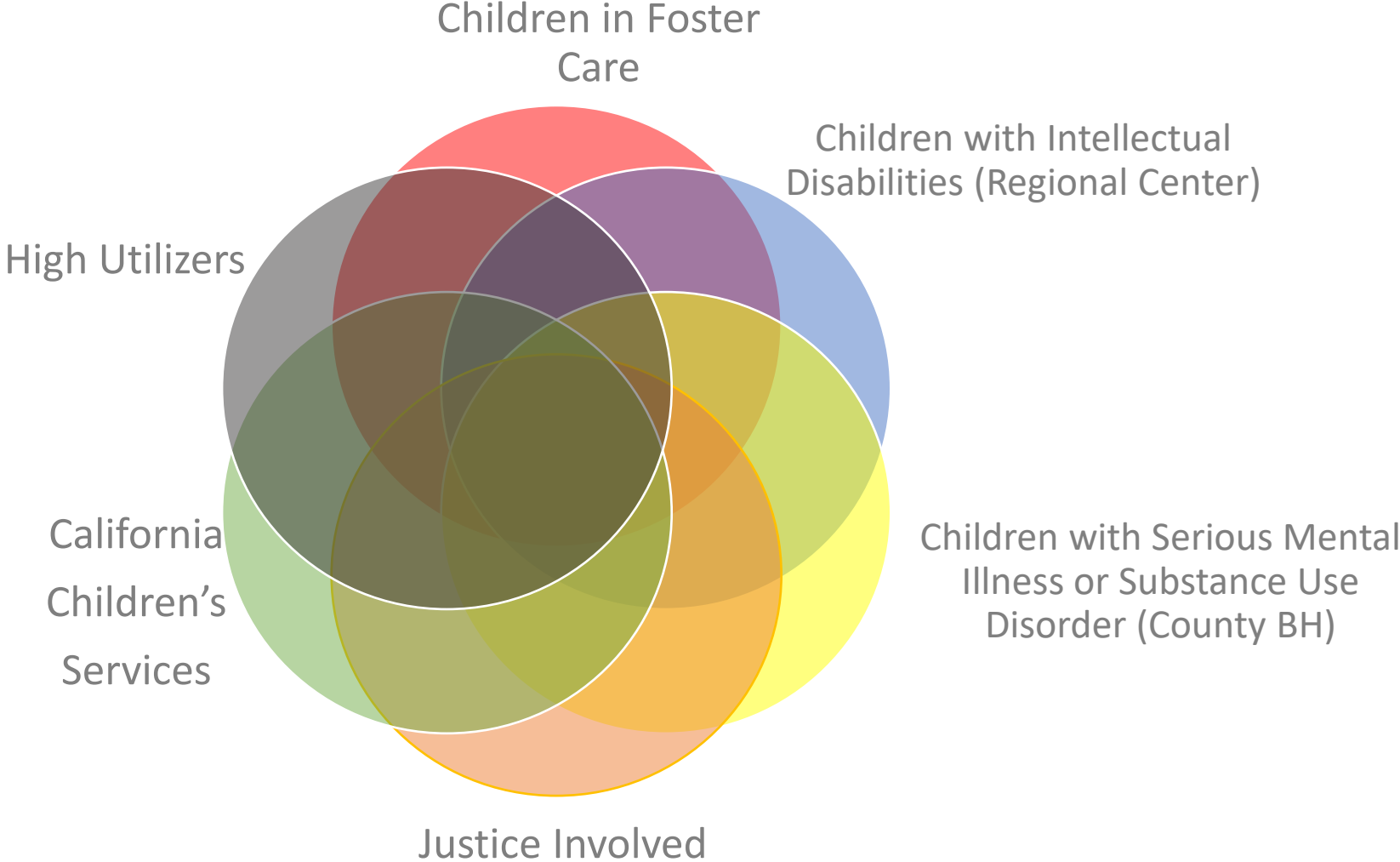
MCP Members can be enrolled in ECM or in the other program, not in both at the same time.

3. Not Eligible to Enroll in ECM

Medi-Cal beneficiaries enrolled in the other program are excluded from ECM.

Children and youth are often engaged with multiple systems of care

ECM is intended to provide a **single point of accountability** to ensure care management across multiple systems/programs — the “air traffic control” role





Children Eligible for ECM (POF)

ECM Populations of Focus Going Live 7/1/23

Children & Youth Experiencing Homelessness

Homeless Families or Unaccompanied Children & Youth Experiencing Homelessness who:

- (1) Are experiencing homelessness, as defined above in under the modified HHS 42 CFR Section 11302 “Homeless” definition; **or**
- (2) Are sharing the housing of other persons (i.e., couch surfing) due to loss of housing, economic hardship, or a similar reason; are living in motels, hotels, trailer parks, or camping grounds due to the lack of alternative adequate accommodations; are living in emergency or transitional shelters; or are abandoned in hospitals (in hospital without a safe place to be discharged to)

Children, youth, and families do not need to meet the additional “complex physical, behavioral, or developmental need” criteria noted for adults

ECM Populations of Focus Going Live 7/1/23

Children & Youth At Risk for Avoidable Hospital or ED Utilization

Children & Youth who meet one or more of the following conditions:

- (1) Three or more emergency room visits in a 12-month period that could have been avoided with appropriate outpatient care or improved treatment adherence;
- (2) Two or more unplanned hospital and/or short-term skilled nursing facility stays in a 12-month period that could have been avoided with appropriate outpatient care or improved treatment adherence

ECM Populations of Focus Going Live 7/1/23

Children & Youth with Serious Mental Health &/or SUD Needs

Children & Youth who meet one or more of the following conditions:

- Meet the eligibility criteria for participation in or obtaining services through one or more of:
 - Specialty Mental Health Services (SMHS) delivered by Mental Health Plans;
 - The Drug Medi-Cal-Organized Delivery System (DMC-ODS) **or** The Drug Medi-Cal (DMC) program

No further criteria are required to be met for children and youth in these POF.
Children and youth do **not** need to meet the additional criteria noted for adults

ECM Populations of Focus Going Live 7/1/23

Children & Youth Transitioning from Incarceration

Children & Youth who:

(1) Are transitioning from being in custody of a youth correctional facility or transitioned from being in custody of a youth correctional facility within the past 12 months

No further criteria are required to be met for children and youth in these POF. Children and youth do **not** need to meet the additional criteria noted for adults

ECM Populations of Focus Going Live 7/1/23

Children & Youth Enrolled in CCS or CCS WCM with Additional Needs Beyond the CCS Condition

Children & Youth who meet one or more of the following conditions:

- (1) Are enrolled in California Children's Services (CCS) or CCS Whole Child Model (WCM); and
- (2) Are experiencing at least one complex social factor influencing their health

Examples include (but are not limited to) lack of access to food; lack of access to stable housing; difficulty accessing transportation; high measure (4+) of ACEs screening; history of recent contacts with law enforcement; or crisis intervention services related to mental health and/or substance use symptoms.

Notes on the Definition:

- Children in CCS or CCS WCM are eligible to receive ECM if they meet the criteria of any other ECM Population of Focus, even if they do not have a complex social factor (in criteria #2 above) of this Population of Focus.
- For example, many children in CCS have a co-occurring behavioral health need; these children would be eligible for ECM.

ECM Populations of Focus Going Live 7/1/23

Children & Youth Involved in Child Welfare

Children & Youth who meet one or more of the following conditions:

- (1) Are under age 21 and are currently receiving foster care in California;
- (2) Are under age 21 and previously received foster care in California or another state within the last 12 months;
- (3) Have aged out of foster care up to age 26 (having been in foster care on their 18th birthday or later) in California or another state;
- (4) Are under age 18 and are eligible for and/or in California's Adoption Assistance Program;
- (5) Are under age 18 and are currently receiving or have received services from California's Family Maintenance program within the last 12 months.

Notes on the Definition:

- Foster care is defined in California by WIC 11400(f).
- California's Adoption Assistance Program is defined by WIC 16120.
- California's Family Maintenance program is defined by WIC 16506 and designed to support a child or youth remaining in a safe, secure, stable home.

ECM Populations of Focus Going Live 7/1/23

Children & Youth with I/DD

Children & Youth who:

- (1) Have a diagnosed I/DD; **and**
- (2) Qualify for eligibility in any other children & youth ECM Population of Focus

Notes on the Definition:

- An I/DD who are served by a Regional Center can qualify for ECM if they meet the eligibility criteria for any ECM PoF. Regional Centers may contract with MCPs to serve as ECM Providers.
- Children & youth with an I/DD receiving 1915(c) waiver services & those residing in an ICF are not eligible for ECM.

ECM Populations of Focus Going Live 7/1/23

Pregnant & Postpartum Individuals who meet other Qualifying ECM Eligibility

Adults and Youth who:

1. Are pregnant or are postpartum (through 12 months period); **and**
2. Qualify for eligibility in any other adult or youth ECM PoF; **or**
3. Are subject to racial and ethnic disparities as defined by California public health data on maternal morbidity and mortality *

Notes on the Definition:

- “Postpartum” means having delivered, whether a live birth or stillbirth; or a late term abortion.
- This PoF is already live statewide as of January 1, 2022 for adults and will go live statewide starting July 1, 2023 for children & youth PoF
- **Pregnant & Postpartum Individuals who are subject to racial & ethnic disparities as defined by California public health data on maternal morbidity and mortality, will go-live statewide on January 1, 2024*

What's Next

Service Expectations: Understanding how ECM connects to existing work to meet the needs of the children and youth ECM PoF

Application and Contracting process: Submitting an application and the contracting process.

Resources Available to Providers: Funding and training is available to support capacity to become ECM providers.

Regional Partnerships and Collaboration: Systems of Care for Children are largely implemented the County-level, Health Net will be supporting a regional approach to implementing ECM for Children.

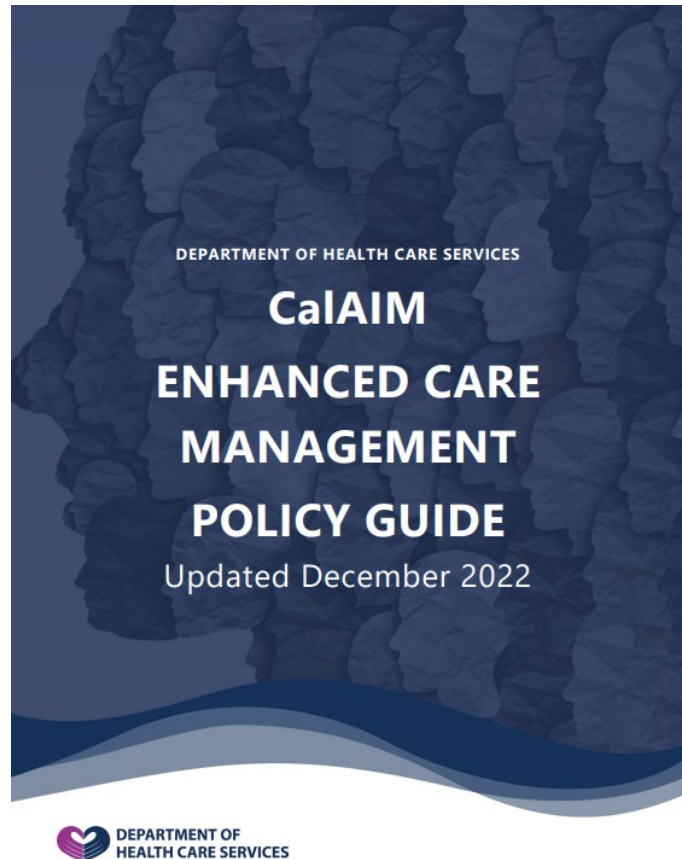
June 28
10 – 11 AM

July 26
10 – 11 AM

Additional Resources



Resources: DHCS ECM Policy Guide



<https://www.dhcs.ca.gov/Documents/MCQMD/ECM-Policy-Guide.pdf>

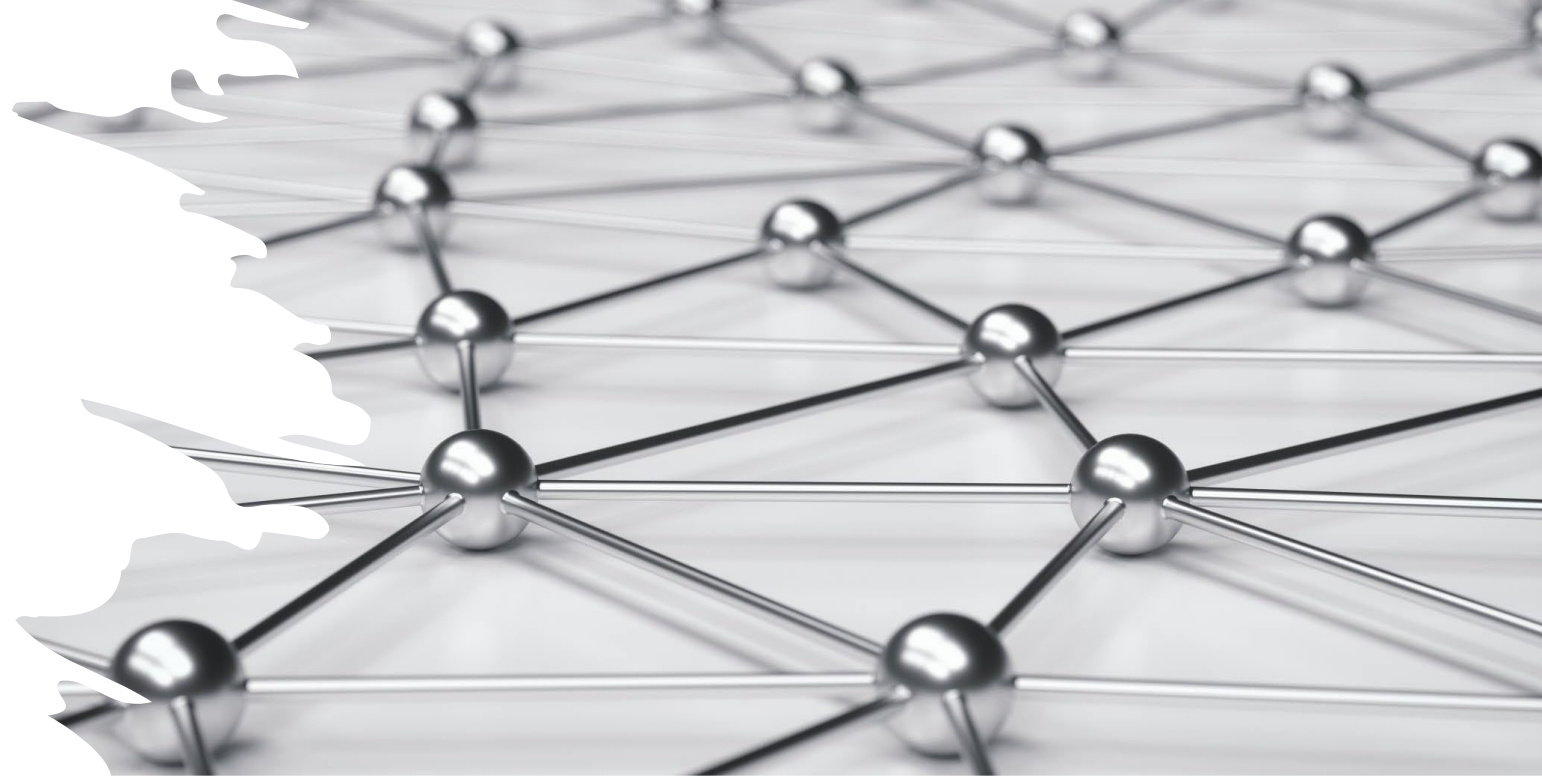
ECM and CS Provider Resource

Health Net:

https://www.healthnet.com/content/healthnet/en_us/providers/support/calaim-resources.html

California Health and Wellness:

<https://www.cahealthwellness.com/providers/resources/calaim-resources.html>



ECM's Seven Core Services

A Whole-Person Approach
with a Focus on In-person Services



Outreach & Engagement

ID, Locate, Contact and Engage → Prioritize those most in need → Various Strategies/Modes → Multiple Attempts → Culturally & Linguistically Appropriate



Comprehensive Assessment & Care Plan

Engage Primarily In-Person & use Innovative Alternatives → Develop a Comprehensive, Individualized, Person-Centered Assessment & Care Plan → Timely Reassessment & Updates to Plan

ECM's Seven Core Services

A Whole-Person Approach
with a Focus on In-person Services



Enhanced Coordination of Care

Organize & Implement activities in the
Care Plan → Promote Integration of all
Care → Engage in Care & Reduce Barriers
→ Communicate with the Team



Comprehensive Transitional Care

Provide Support During Transitions of Care
(TOC) → Coordinate with Providers →
Educate the Member → Review
Medications → Overall Goal to Reduce
Avoidable Readmissions

ECM's Seven Core Services

A Whole-Person Approach
with a Focus on In-person Services



Health Promotion

Identify Member's Strengths, Resiliencies & Supports → Coaching to health lifestyle choices
→ Promote Skill-building and Self-Management



Individual & Family/Social Supports

Identify, Document & Educate Chosen Caregivers/Support → Integrate Supports in Member's Care → Connect with Additional Resources



Coordination of & Referral to Community & Social Support Services

Identify Needed Resources → Coordinate and Refer → Follow up (Close the Loop)

Community Supports

**Housing Transition
Navigation Services**

Housing Deposits

**Housing Tenancy and
Sustaining Services**

**Short-Term Post-
Hospitalization
Housing**

**Recuperative Care
(Medical Respite)**

**Day Habilitation
Programs**

**Caregiver Respite
Services**

**Nursing Facility
Transition/Diversion to**

**Assisted Living
Facilities**

**Community Transition
Services/Nursing**

**Facility Transition to a
Home**

**Personal Care and
Homemaker Services**

**Environmental
Accessibility
Adaptations**

(Home Modifications)

**Medically Supportive
Food/Meals/Medically**

Tailored Meals

Sobering Centers

Asthma Remediation

*Not all community
supports available in
each county/plan*